

LEGEND

- Proposed Right of Way (ROW)
- Temporary Access/ROW
- a. New Sidewalk
- b. HAWK Pedestrian Crossing
- c. Proposed Detention Area
- d. Improved Roadway Curve/Geometry
- e. Signalized Intersection
- f. Maintain Existing Driveway Access adjacent to the Corridor



Section 2 Elkhart County
From County Road 35 to State Route 13

PROPOSED ROAD CORRIDOR (1 of 3)

INDOT Des. No. 1900095





- LEGEND**
- Proposed Right of Way (ROW)
 - Temporary Access/ROW
 - Proposed Detention Area
 - Improved Roadway Curve/Geometry
 - Signalized Intersection
 - Maintain Existing Driveway Access adjacent to the Corridor

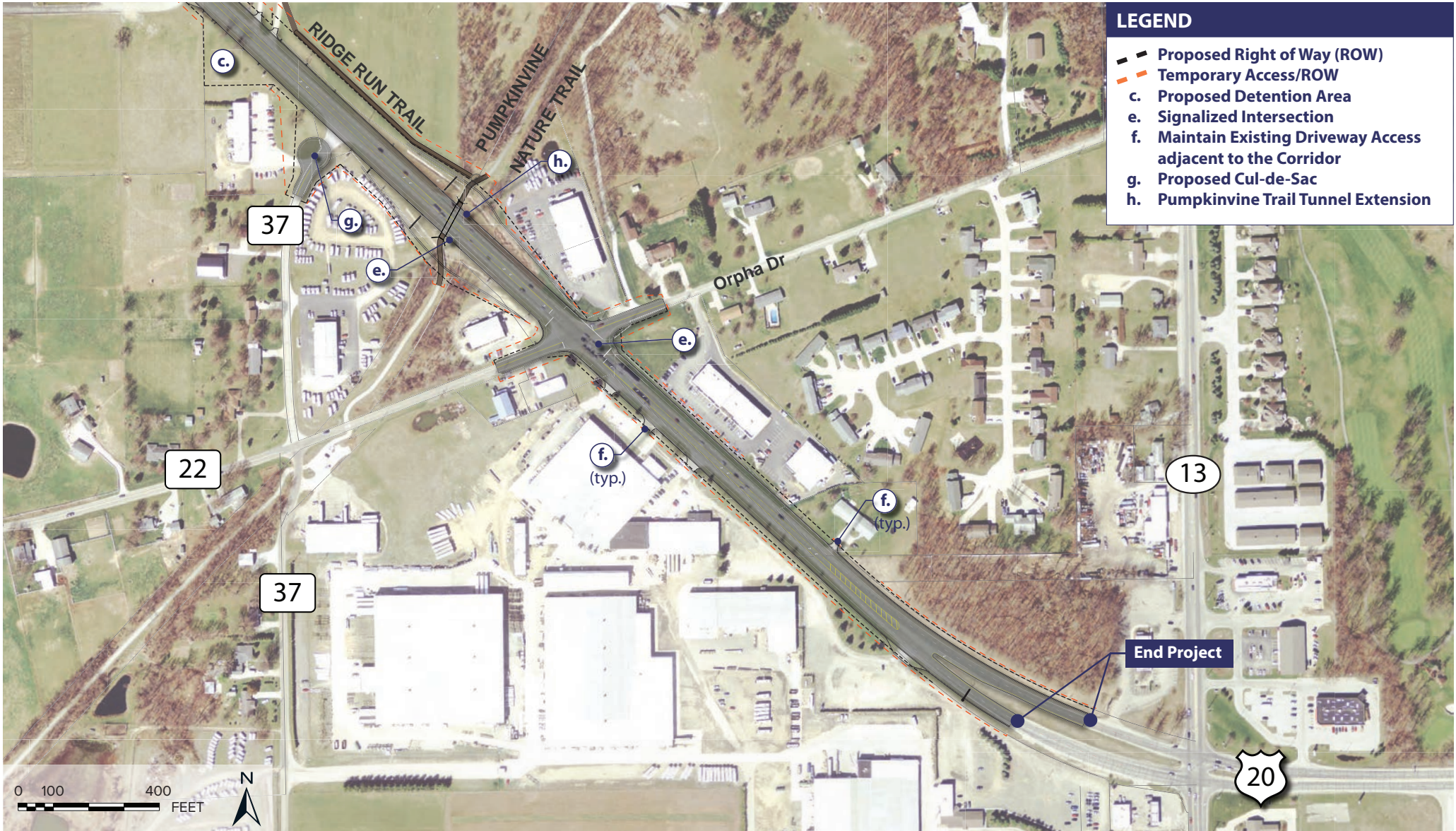


Section 2 Elkhart County
From County Road 35 to State Route 13

PROPOSED ROAD CORRIDOR (2 of 3)

INDOT Des. No. 1900095





LEGEND

- Proposed Right of Way (ROW)
- Temporary Access/ROW
- Proposed Detention Area
- Signalized Intersection
- Maintain Existing Driveway Access adjacent to the Corridor
- Proposed Cul-de-Sac
- Pumpkinvine Trail Tunnel Extension





Section 2 Elkhart County
From County Road 35 to State Route 13

TYPICAL ROAD SECTION

INDOT Des. No. 1900095



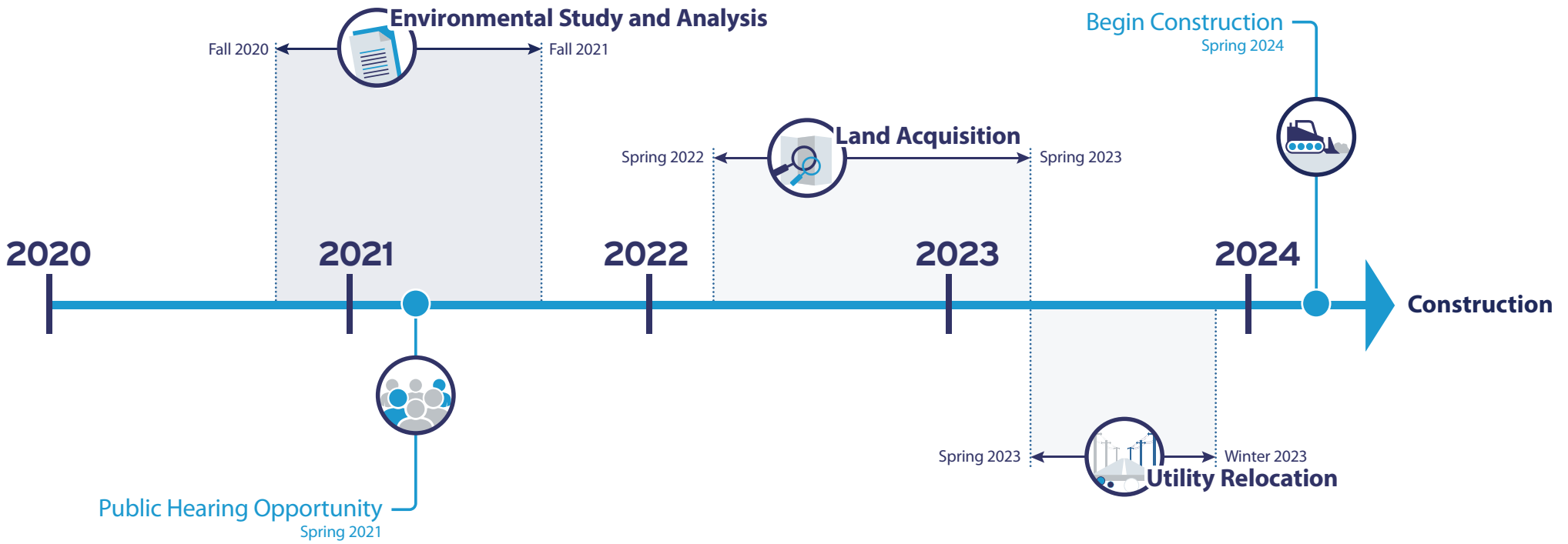
HAWK SIGNAL

High Intensity Activated CrossWalk



PEDESTRIANS	SEE THIS	DO THIS
		PUSH THE BUTTON
		STOP & WAIT for the WALK signal.
		START CROSSING Always watch for cars.
		FINISH CROSSING

DRIVERS	SEE THIS	DO THIS
		DRIVE Always look for people who plan to cross.
	(Flashing Yellow) 	SLOW DOWN A person has activated the push button.
		Prepare to STOP
		STOP for pedestrian. (As with any signal RED means STOP)
(Flashing Red) 	STOP FIRST Proceed with caution if no people are present.	



Section 2 Elkhart County
From County Road 35 to State Route 13

PROJECT SCHEDULE

INDOT Des. No. 1900095

