



Section 2 Elkhart County

From County Road 35 to State Route 13

INDOT Des. No. 1900095

April 21, 2021

Northridge High School

6:00 pm

Hearing presented concurrently via Facebook Live

Agenda

- Welcome & Introductions
- Covid-19 Protocol
- Formal Public Hearing
 - Presentations
 - Public statements for the record
 - Adjourn formal hearing

FOR YOUR SAFETY



FACE MASK

Face Covering Required



KEEP 6 FT APART

Maintain Social Distance

Invited to the display area for Q & A
with the project team

HNTB

NextLevel
INDIANA

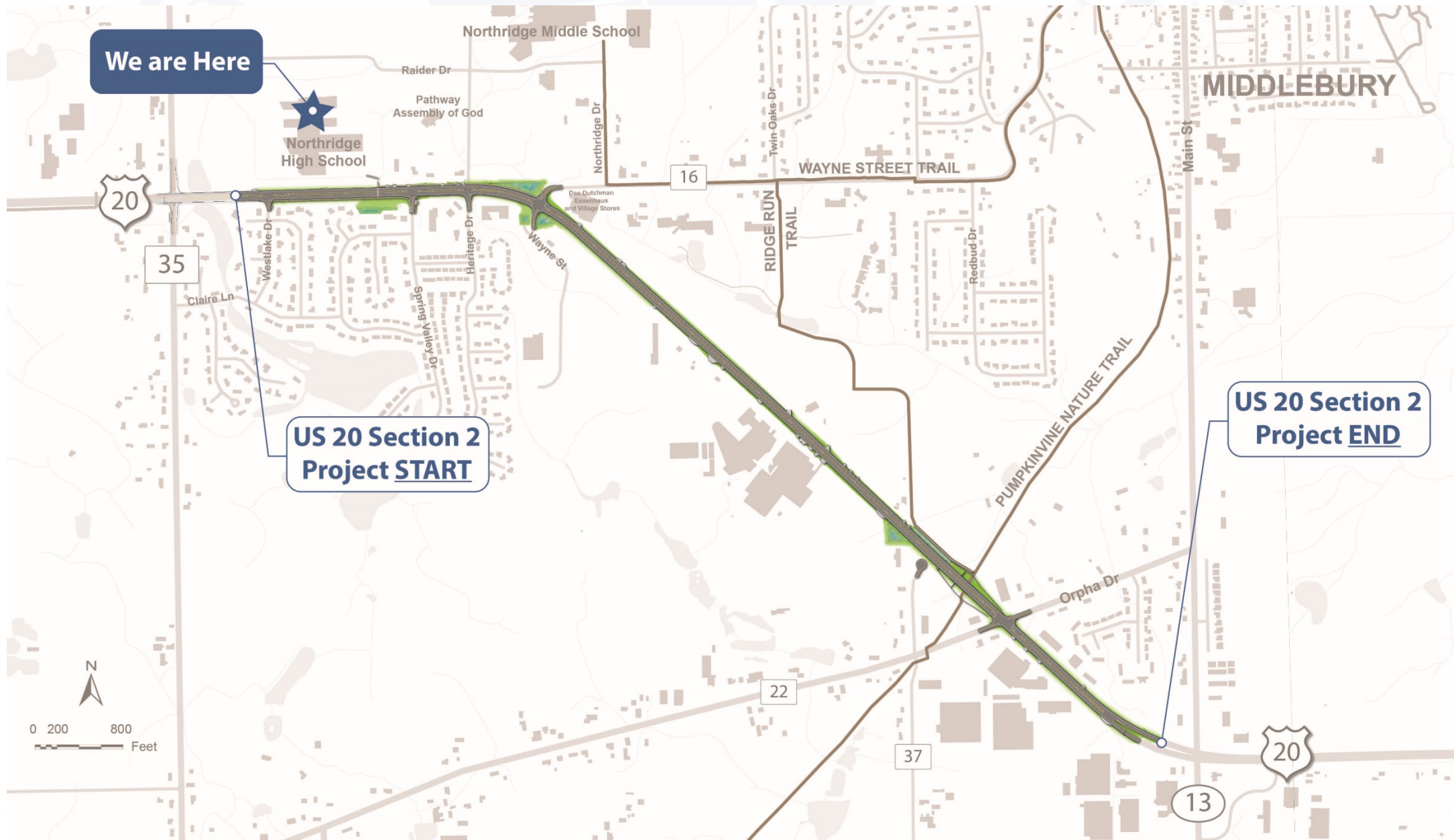
Why a Public Hearing?

Conducted as a requirement to the National Environmental Policy Act (NEPA)

- NEPA requires evaluation of potential impacts to surrounding natural, cultural, and social environments.
- Impacts are to be described in an environmental document.
- Requires opportunity for the public to be involved and comment in the project decision-making process.



Project Location: US 20 (from CR 35 to SR 13)



Purpose & Need –Why are we here?

Improve Safety

- 96 Crashes in the Study Area, half of which were rear end crashes
- Reduce the number of rear end crashes on the facility by adding a Two-Way Left Turn Lane.

Reduce Traffic Congestion

- MACOG predicts high levels of congestion and delays in 2045
- Improve the traffic flow on US 20 by adding a through lane.



Purpose & Need –Why are we here?

Roadway Alignment and Drainage

- Curve near Wayne Street is too tight and lacks enough banking. Roadway experiences frequent ponding problems.
- Correcting the curve near Wayne Street
- Correct the grading of the road to reduce ponding

Local Community Needs

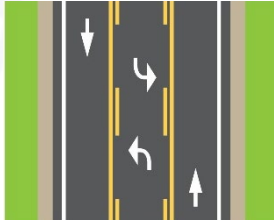
- Provide separation between pedestrians and vehicles.
- Provide space between buggies and vehicles.
- Improve truck access to local businesses



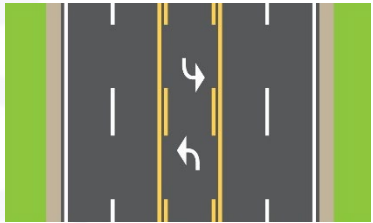
Alternatives Considered



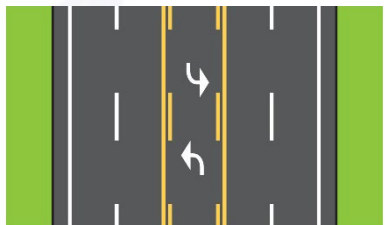
Do nothing



2- Lane with Two-Way Left Turn Lane



4-Lane with Two-Way Left Turn Lane (Rural)

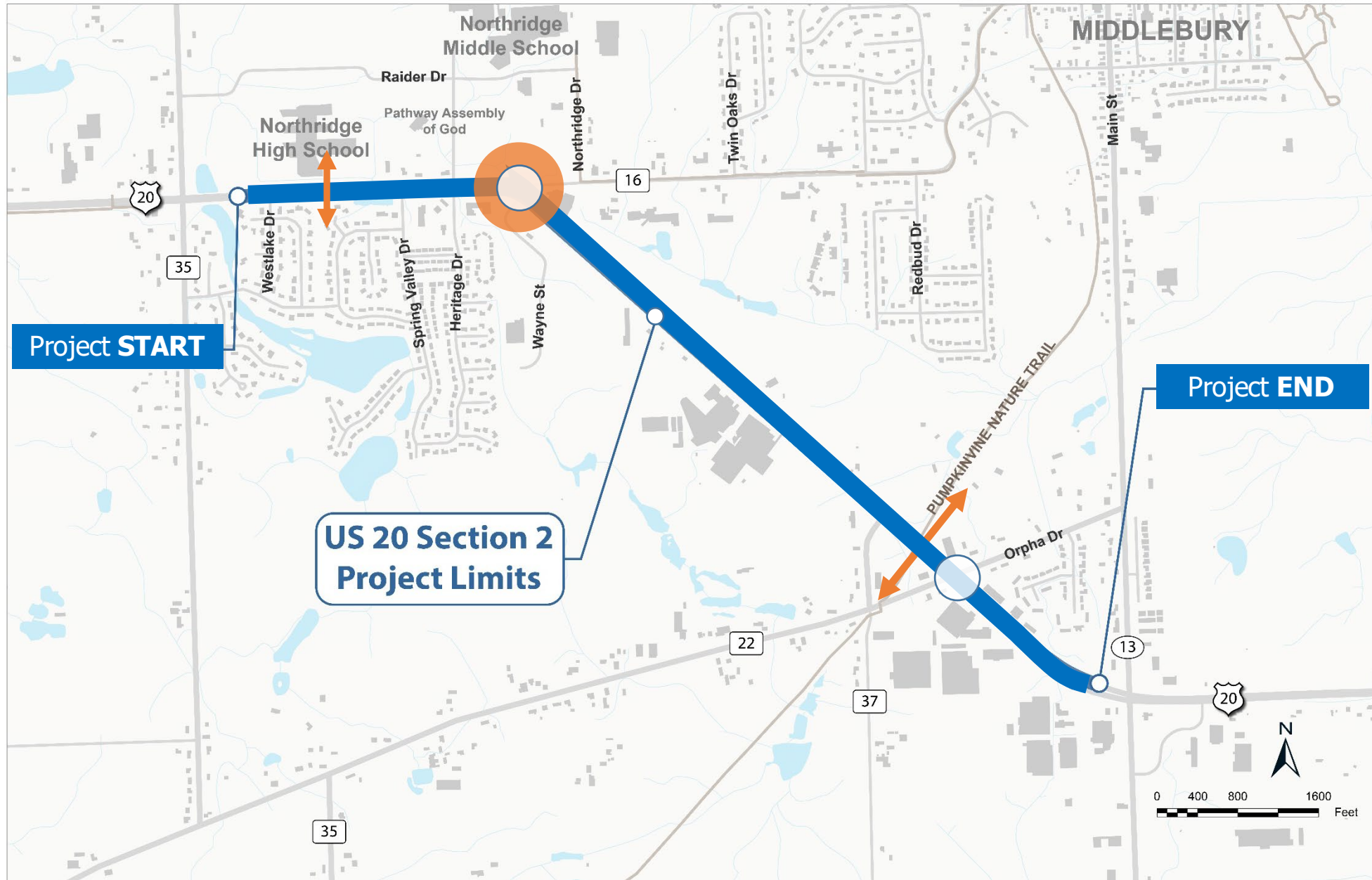


4-Lane with Two-Way Left Turn Lane (Urban)

Preferred Alternative

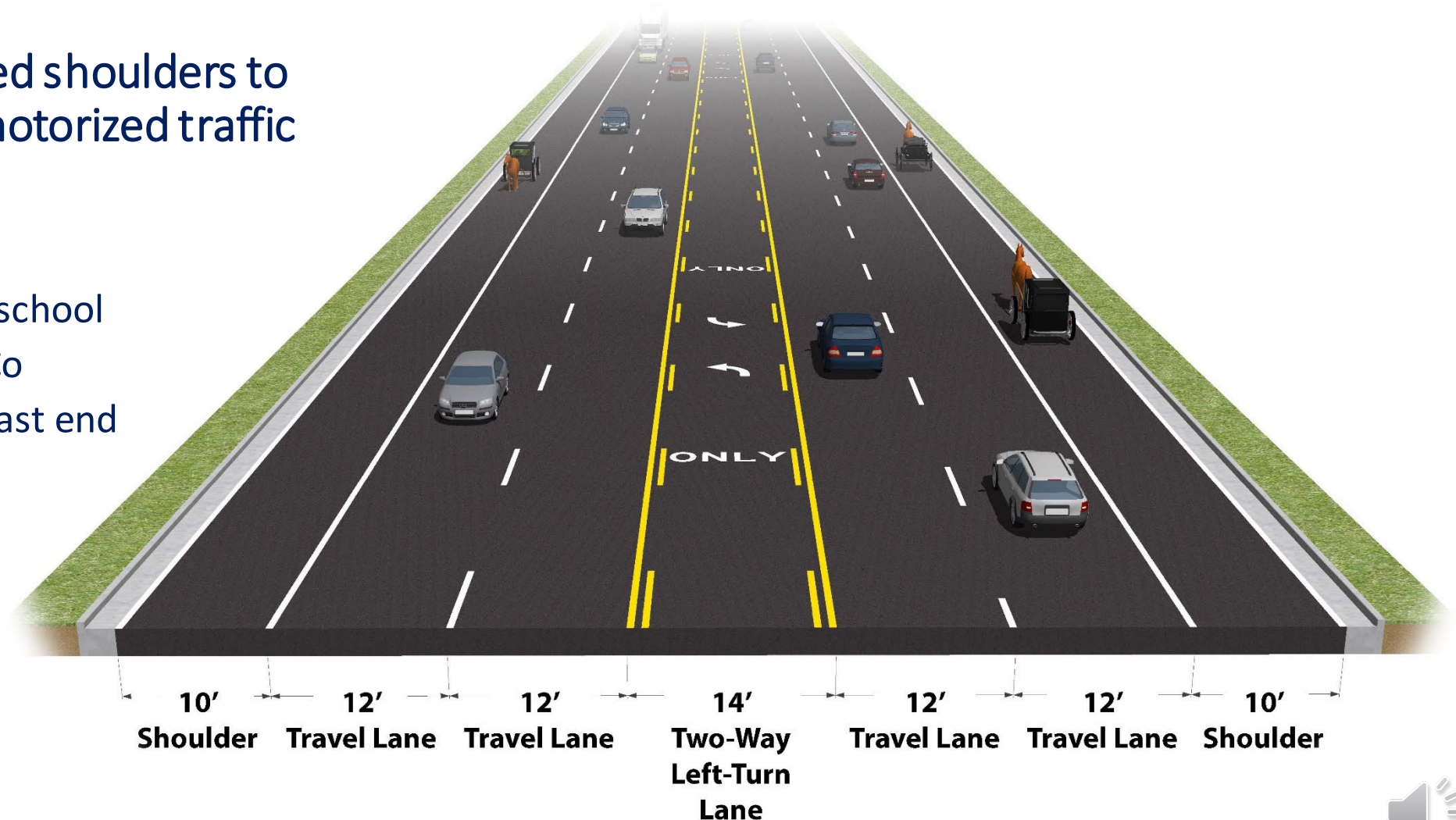


Project Location: US 20 (from CR 35 to SR 13)

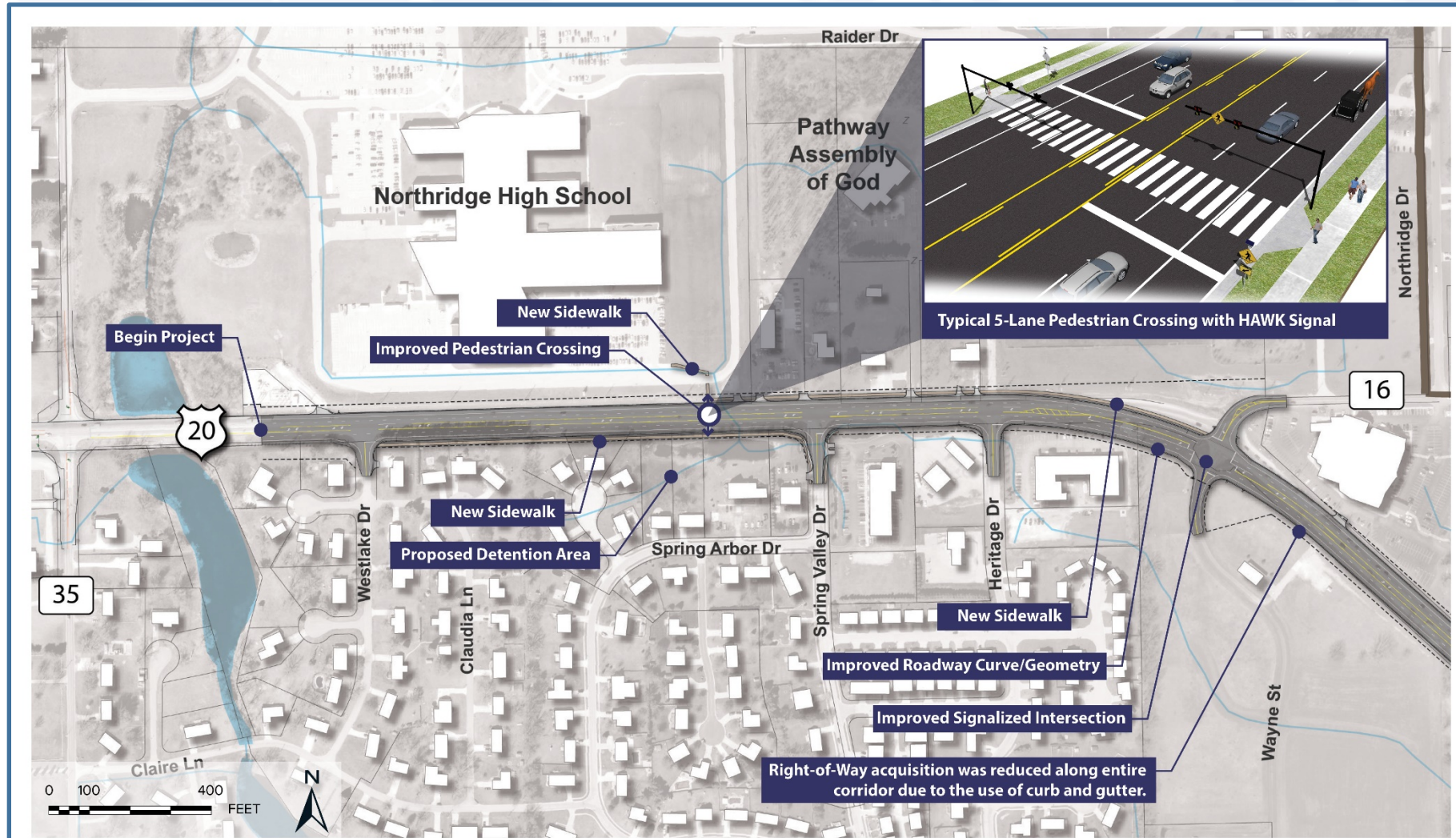
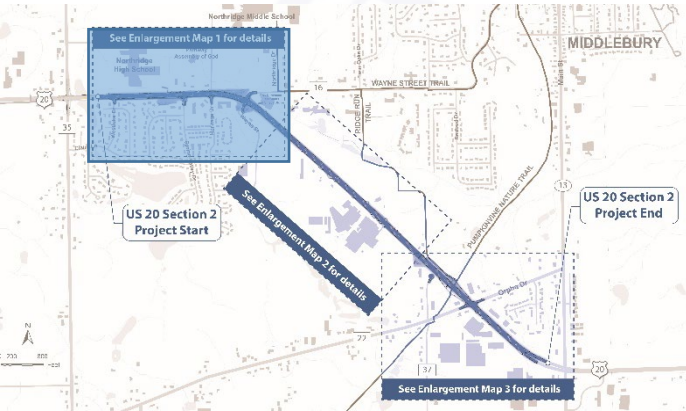


Typical Section - Roadway

- 4-lanes with Two-Way Left Turn Lane (TWLTL)
- Includes 10-foot paved shoulders to accommodate non-motorized traffic
- Widening varies
 - South side near the school
 - North side near JayCo
 - Equal widening on east end



Proposed Road Corridor: (Exhibit 1 of 3)



 **Section 2** Elkhart County
From County Road 35 to State Route 13

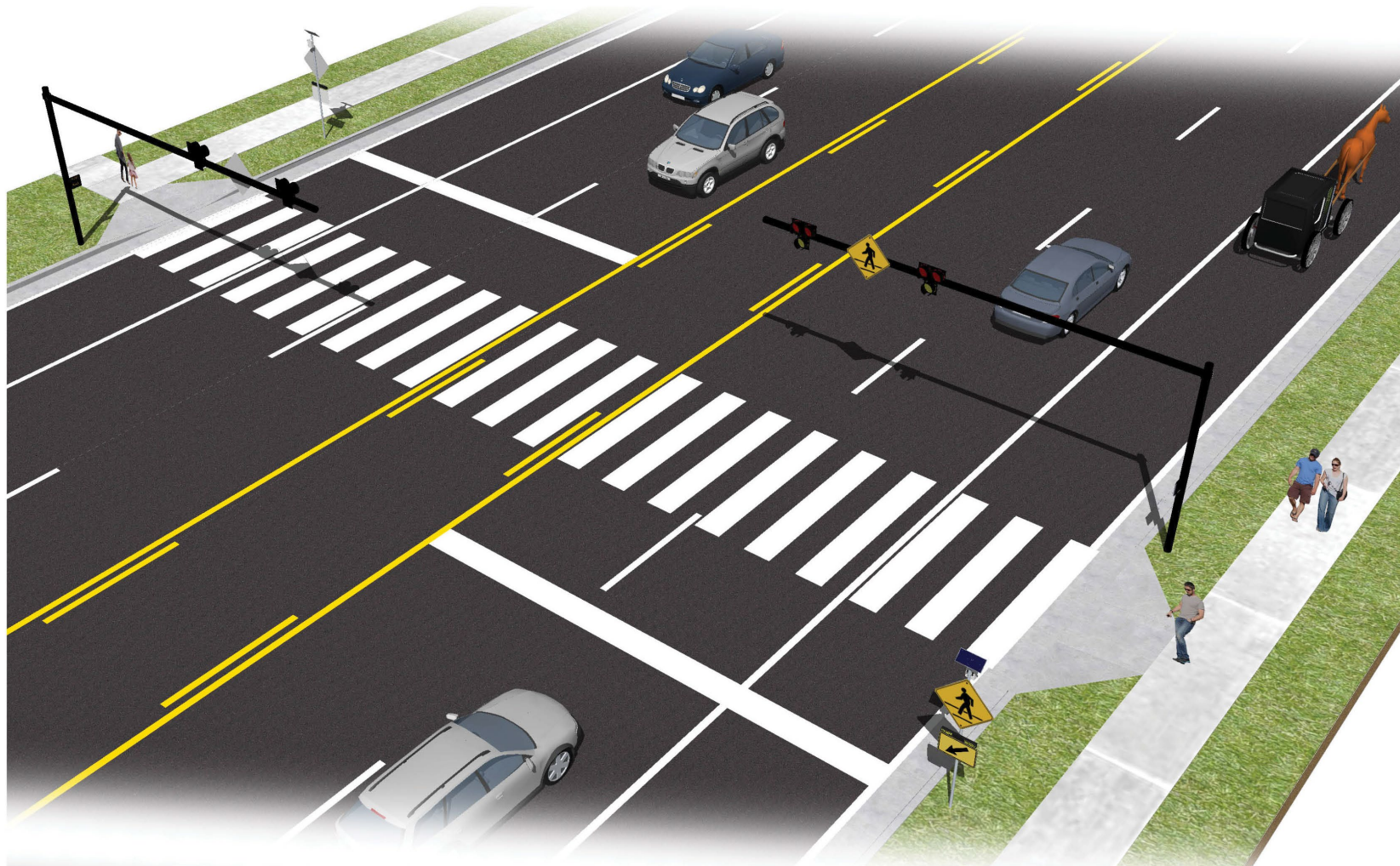
PROPOSED ROAD CORRIDOR
Enlargement Map 1 of 3

INDOT Des. No. 1900095



Pedestrian Crossing: HAWK Signal at US 20

High Intensity Activated CrossWalk



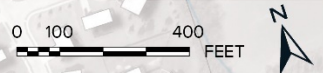
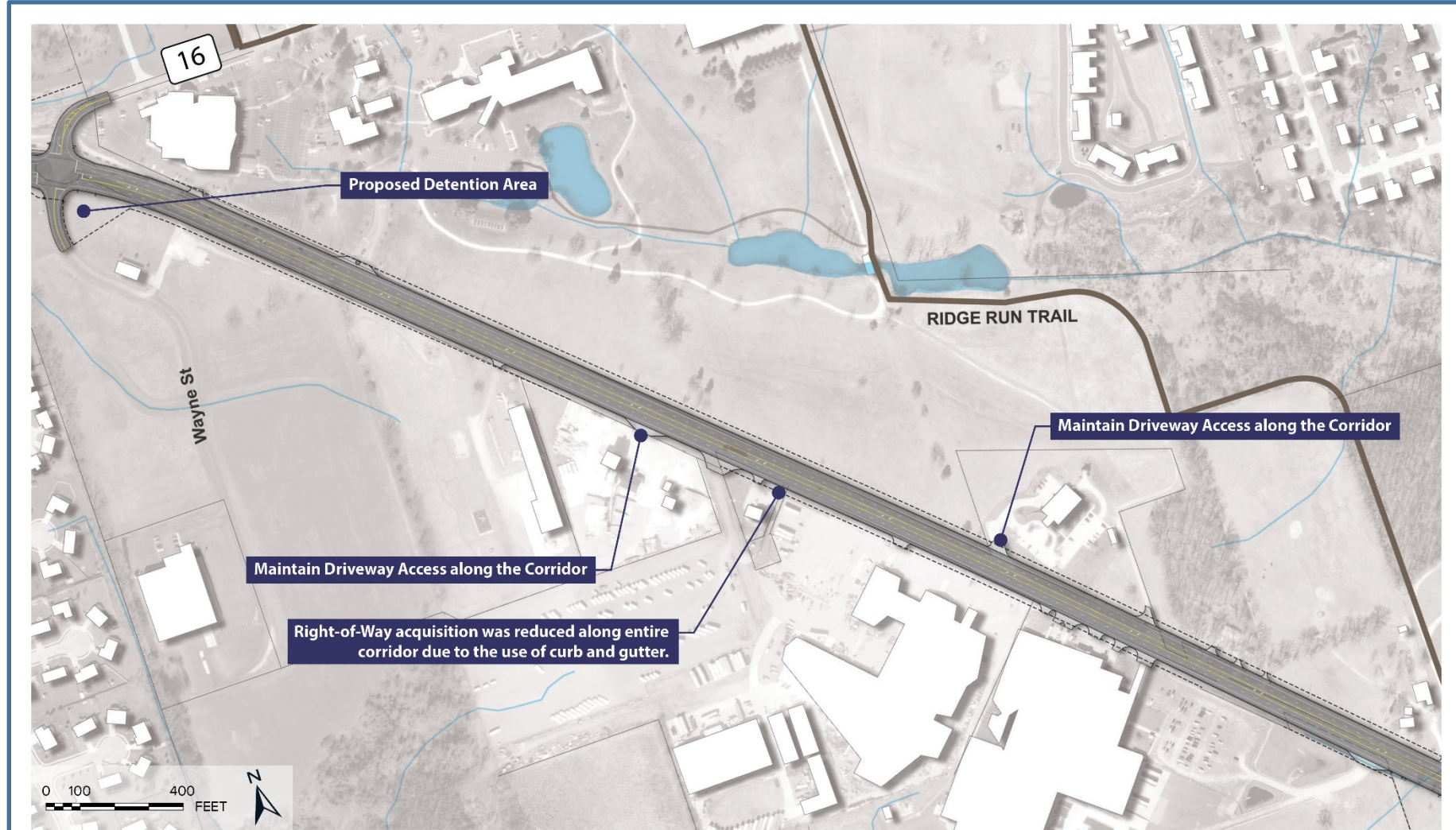
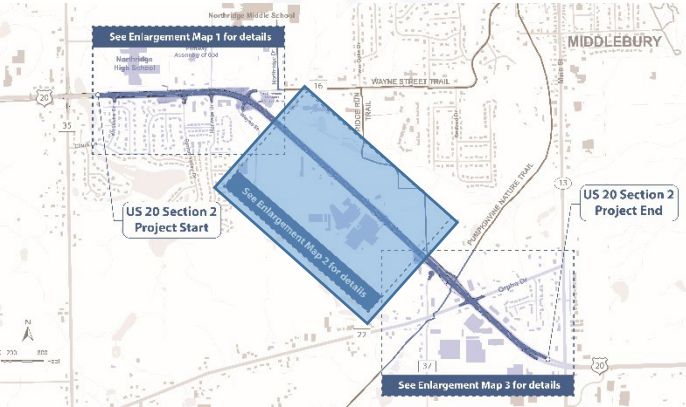
PEDESTRIANS	SEE THIS	DO THIS
		PUSH THE BUTTON
		STOP & WAIT for the WALK signal.
		START CROSSING Always watch for cars.
		FINISH CROSSING

DRIVERS	SEE THIS	DO THIS
		DRIVE Always look for people who plan to cross.
	(Flashing Yellow) 	SLOW DOWN A person has activated the push button.
		Prepare to STOP
		STOP for pedestrian. (As with any signal RED means STOP)
(Flashing Red) 	STOP FIRST Proceed with caution if no people are present.	

Improvements to the Curve at Wayne Street



Proposed Road Corridor: (Exhibit 2 of 3)



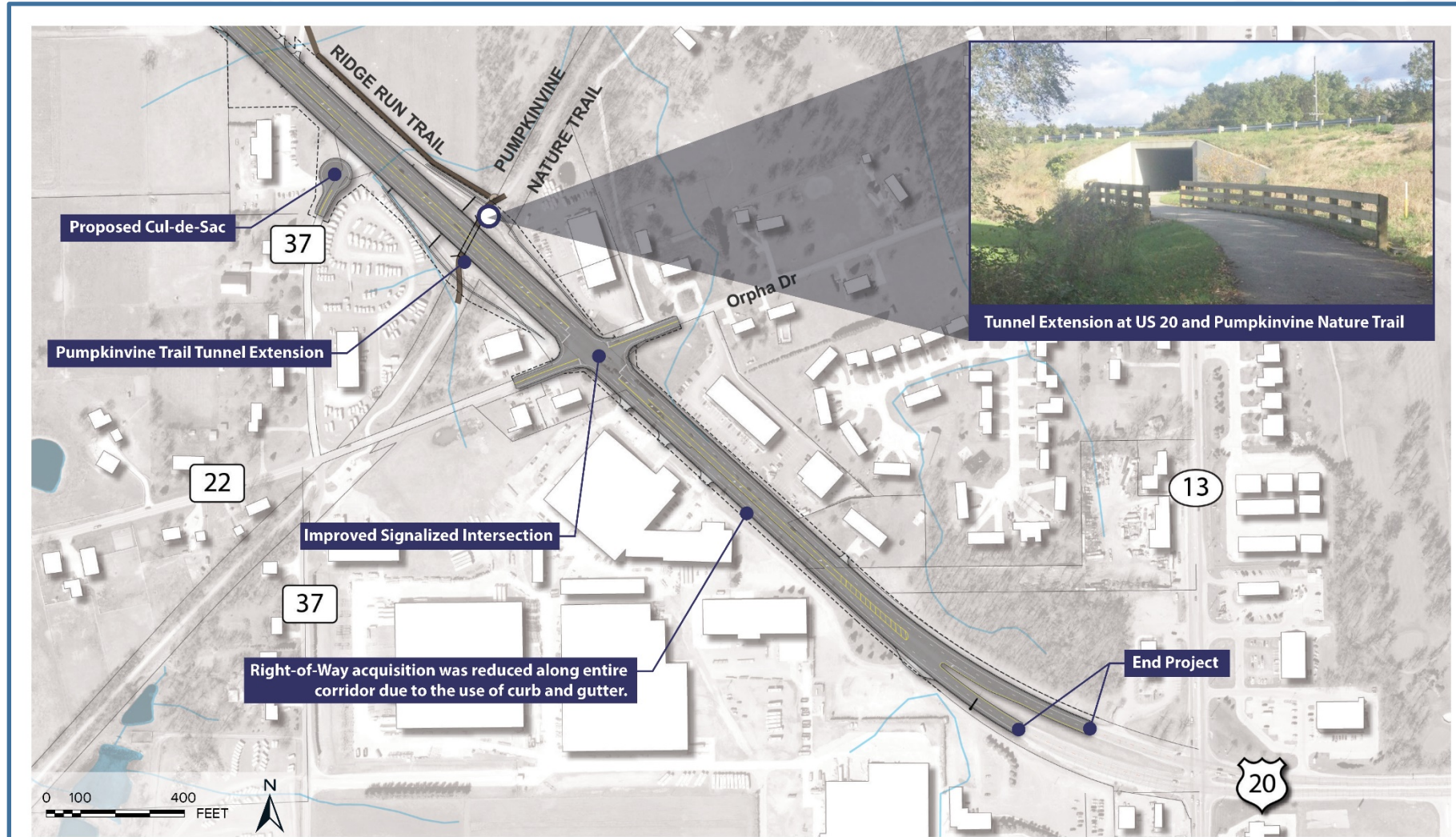
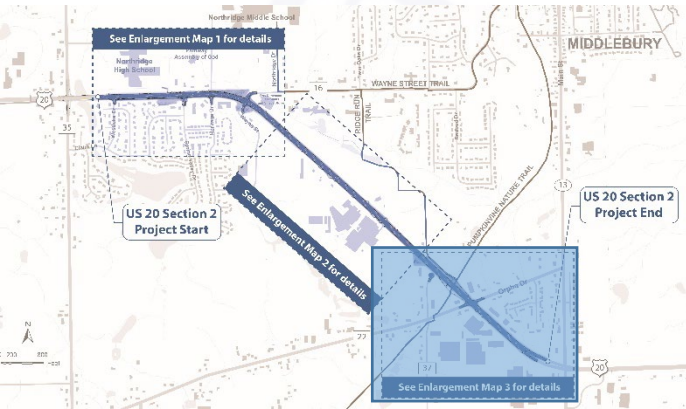
Section 2 Elkhart County
From County Road 35 to State Route 13

PROPOSED ROAD CORRIDOR Enlargement Map 2 of 3

INDOT Des. No. 1900095



Proposed Road Corridor: (Exhibit 3 of 3)



 **Section 2** Elkhart County
From County Road 35 to State Route 13

PROPOSED ROAD CORRIDOR Enlargement Map 3 of 3

INDOT Des. No. 1900095



Utilities

- Completed utility locates
- Relocations expected:
 - Electric
 - Telephone
 - Fiber optics
 - Cable
 - Water
 - Gas

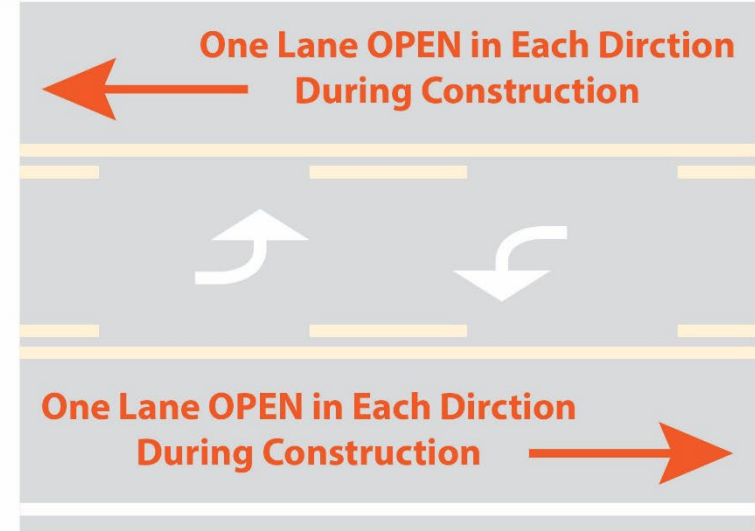


Maintenance of Traffic – 3 Phases

- Phase 1
 - Temporary widening to the north while maintaining existing traffic.
- Phase 2
 - Construct entire southern portion of U.S. 20 while maintaining traffic on the temporary widening.
- Phase 3
 - Switch traffic over to newly constructed south half.
 - Northern half constructed.



Work Zone Safety is Everyone's Responsibility



Maintenance of Traffic – 3 Phases

- Access to be maintained to all properties, homes and businesses along the project.
- Short term closures of county road intersections and secondary driveways with U.S. 20 may occur.
- Mail and trash collection services to remain open.
- Coordination with EMS and schools.



Environmental Studies

Areas of environmental impacts

- Right-of-Way
- Hazardous Materials
- Threatened & Endangered Species
- Historic & Archaeological
- Community Impacts
- Land Use
- Wetlands & Waterways
- Noise analysis
- Recreational Facilities



Environmental Impacts

- Approximately 0.05 acre of wetlands impacted for roadway widening and drainage improvements.
- No noise barriers warranted.
- No historic properties affected.



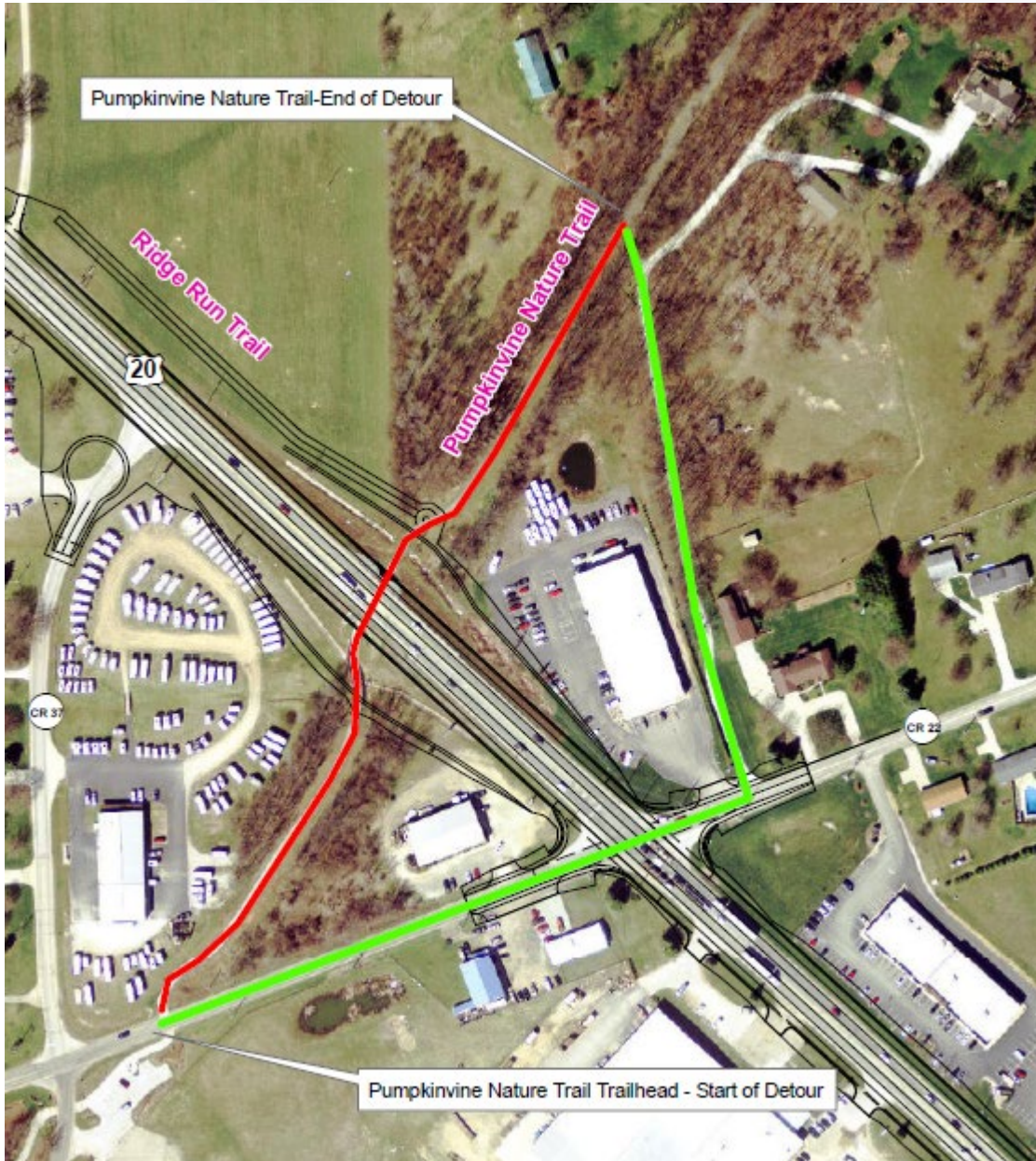
Recreational Trails



- Pumpkinvine Nature Trail
 - Temporarily closed during construction
 - Detour provided Using Orpha Drive
- Ridge Run Trail



Recreational Trails (continued)



- During closure, the Pumpkinvine Nature Trail will be detoured to keep the trail open.



Environmental Document

- Additional Information (AI) document to the Categorical Exclusion Level 4 prepared for US 20 Section 1.
- Copies of this document can be viewed at the
Middlebury Public Library
101 Winslow Street
Middlebury IN 46540
- **Published Legal Notice**
 - Elkhart Truth and Die Blatt
 - April 2 and April 12, 2021
 - E-mailed or mailed to stakeholders and property owners
 - Announcing the public hearing and the documents are available for viewing and comment



Right-of-Way

- Approximately 12.3 acres of permanent new right-of-way and 7.3 acres of temporary right-of-way
- One potential relocation

Residential	2.5 Acre
Commercial	3.8 Acre
Industrial	1.3 Acre
Other	4.7 Acre

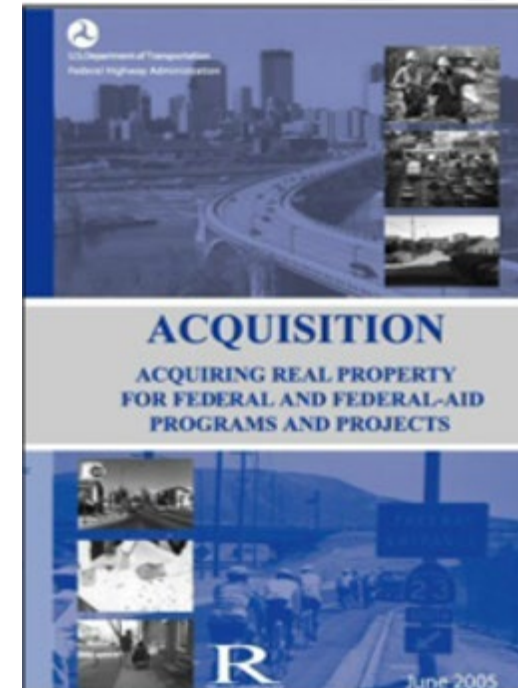
The screenshot shows the Federal Highway Administration (FHWA) website. The main navigation bar includes 'Office of Planning, Environment, & Realty (HEP)' and 'Real Estate'. The 'Real Estate' section is active, with sub-tabs for 'Uniform Act Requirements', 'Right-of-Way', and 'Outdoor Advertising Control'. The 'Right-of-Way' sub-tab is selected, leading to the 'Acquisition' page. The page title is 'Acquisition' and the subtitle is 'Acquiring Real Property for Federal and Federal-aid Programs and Projects'. The page number is 'FHWA-HEP-05-030'. A PDF icon indicates the document is available in PDF format (2.77MB). A 'TABLE OF CONTENTS' section lists: Introduction, Important Terms Used In This Brochure, Property Appraisal, and Just Compensation. A 'Related Items' box on the right mentions 'Supercompensation Payments Incurred for Acquisition of Real Property on Projects Eligible for Federal Funding'. The page also features a 'Realty' banner and a 'Contacts' section with information about Arnold Feldman.

https://www.fhwa.dot.gov/real_estate/uniform_act/acquisition/real_property.cfm

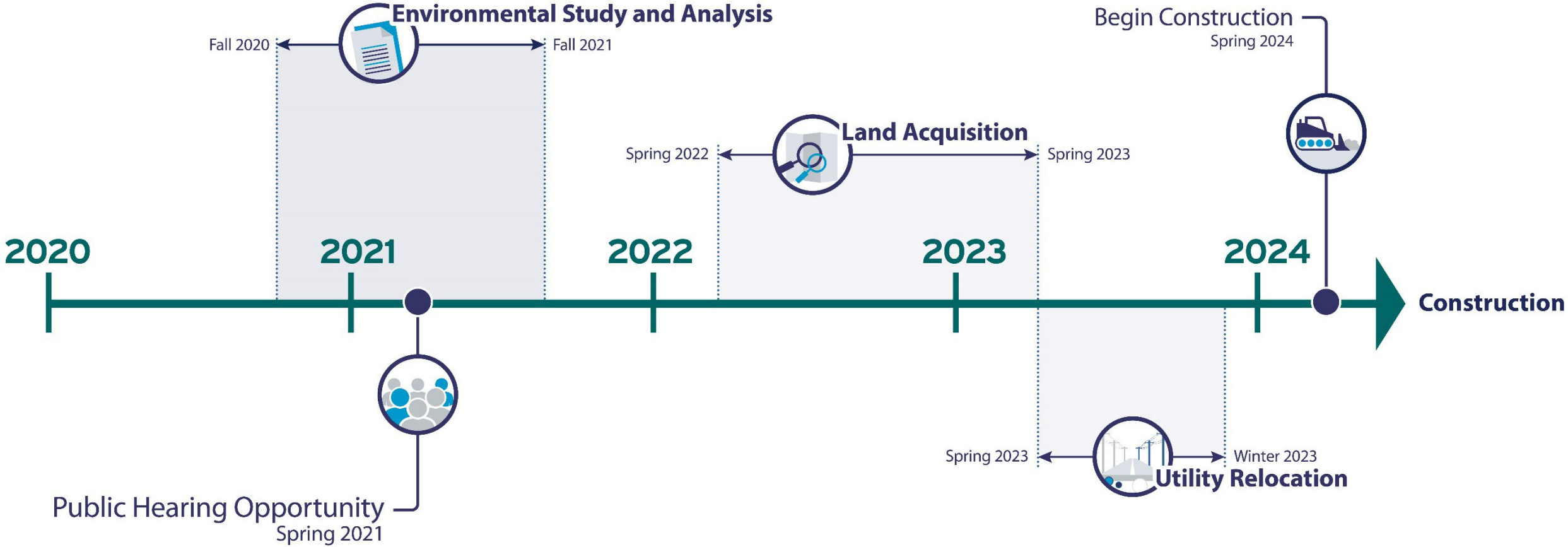


Real Estate Acquisition Process

- “Uniform Act” of 1970
 - All federal, state, and local governments must comply by requiring just compensation.
- Acquisition Process
 - Appraisals
 - Review appraisals
 - Amount of compensation cannot be less than fair market value
 - Offer will be made in writing
 - No agreement
 - Mediation
 - Condemnation



Project Timeline



How Will Comments be Addressed?

All comments received will be addressed in the Final Environmental Document as a result of:

- The public statements recorded at this public hearing.
- All written comments, concerns, and suggestions such as letters, faxes, and emails received during the comment period.

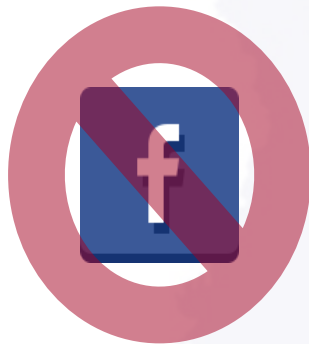
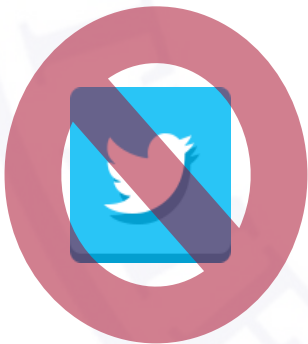
Informal comments are always welcome, however, please note general conversations are not part of the official record.



Ways to Comment **Due by May 14, 2021**



- Public statement session
- Individual comment with court reporter
- Comment form
- Email
- Mail



NOTE: Comments posted on Twitter and Facebook **will not** be recorded as official project comments.



Remote Public Comments

- Written Statements – Comment Sheet, U.S. Postal Service or E-mail

Rich Connolly
111 Monument Circle Suite 1200
Indianapolis, IN 46204
rconnolly@HNTB.com
317-636-4682
FAX 317-917-5211

Visit the project web page: <https://us20section2elkhartcounty.com>

- Comments will be accepted through May 14, 2021.

All comments will be reviewed and evaluated and given full consideration before final design decisions.



Your Participation Adds Value to the Community

- **Verbally as a Public Statement**
 - Statements are documented via the court reporter.
 - Either in front of the group or individually with the court reporter.
- **Comment Form**
 - Submit via fax, mail, email, or comment box.
 - Website: <https://us20section2elkhartcounty.com> (Click on **COMMENT** button at top of website)
- **Email: rconnolly@HNTB.com or**
- **Comment Period ends: May 14, 2021**

Please feel free to use any and all methods listed above.



Comment Session

- Only responses to questions for clarification will be provided as part of the public comment session tonight.
- Statements are for the official public hearing transcript.
- First speakers are from the sign-in sheet.
- Open for additional public statements from the floor.
- Please come forward to the podium so that we may accurately record your statements.
- State your full name for the record.
- We encourage and appreciate your comments.



Thank You

Please visit with project representatives following the public comment session.

- View displays and preliminary plans.
- Exchange informal questions and answers.
- Informal comments are always welcome; however, please note general conversations are not part of the official record.

Thank you for your attendance this evening.

Formal public hearing is adjourned.

